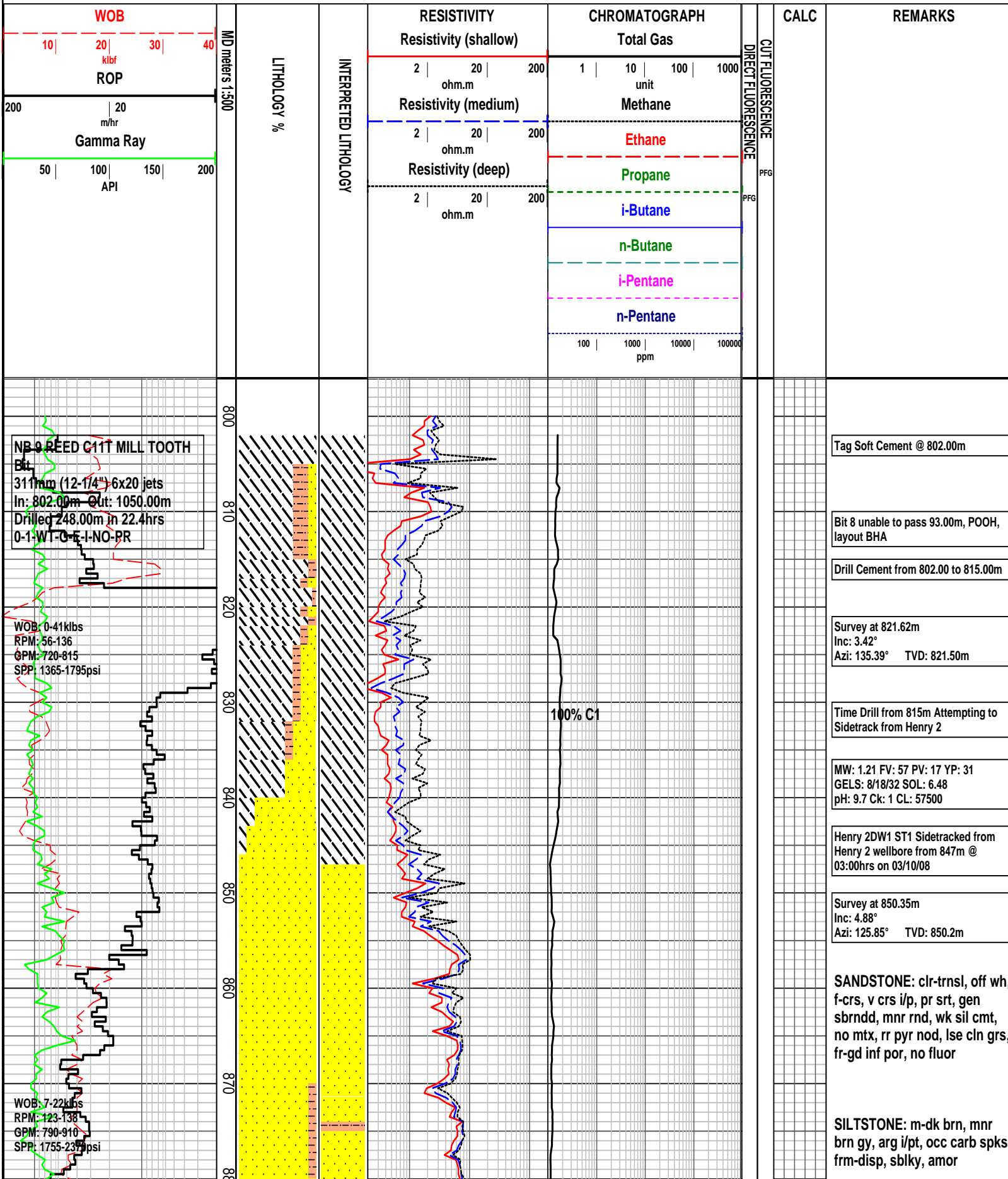


HENRY 2DW1 ST1 FORMATION EVALUATION LOG



Tag Soft Cement @ 802.00m

Bit 8 unable to pass 93.00m, POOH, layout BHA

Drill Cement from 802.00 to 815.00m

Survey at 821.62m
Inc: 3.42°
Azi: 135.39° TVD: 821.50m

Time Drill from 815m Attempting to Sidetrack from Henry 2

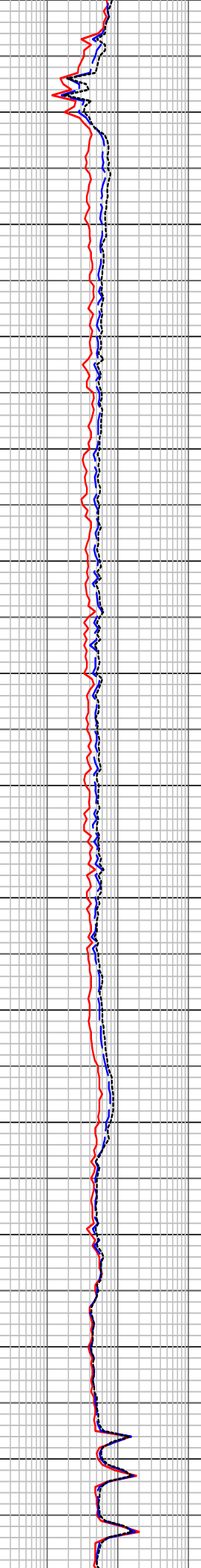
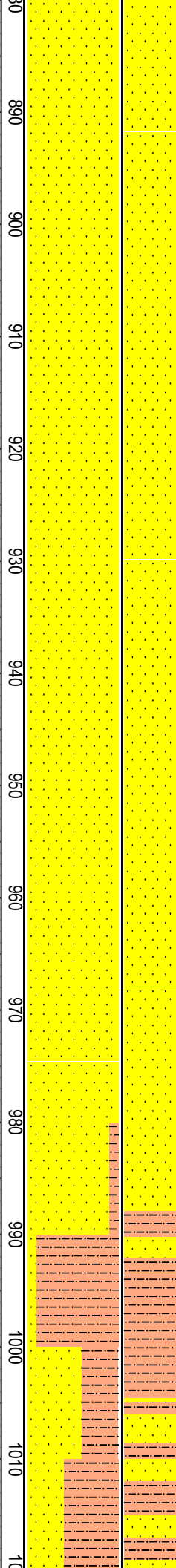
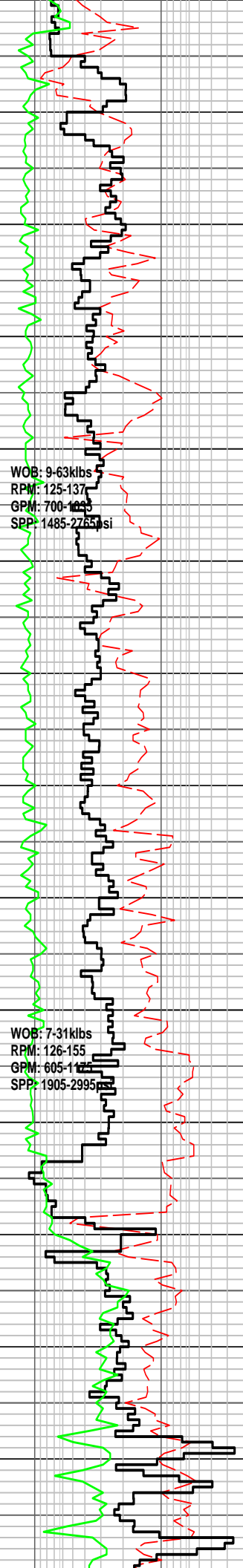
MW: 1.21 FV: 57 PV: 17 YP: 31
GELS: 8/18/32 SOL: 6.48
pH: 9.7 Ck: 1 CL: 57500

Henry 2DW1 ST1 Sidetracked from Henry 2 wellbore from 847m @ 03:00hrs on 03/10/08

Survey at 850.35m
Inc: 4.88°
Azi: 125.85° TVD: 850.2m

SANDSTONE: clr-trnsl, off wh, f-crs, v crs i/p, pr srt, gen sbrndd, mnr rnd, wk sil cmt, no mtx, rr pyr nod, lse clin grs, fr-gd inf por, no fluor

SILTSTONE: m-dk brn, mnr brn gy, arg i/p, occ carb spks, frm-disp, sblky, amor



100% C1

100% C1

Survey at 878.21m
 Inc: 6.34°
 Azi: 127.70° TVD: 877.90m

SANDSTONE: clr-trsl, off wh, m-v crs, pr srt, sbang-dom sbrndd, wk sil cmt, no mtx, mnr pyr nod, lse cln grs, fr-gd inf por, no fluor

Survey at 909.59m
 Inc: 7.84°
 Azi: 131.90° TVD: 909.10m

SANDSTONE: pl gy-off wh, clr-trnsl, crs-v crs, mod srt, sbang-sbrndd, mnr rndd, wk sil cmt, no mtx, mnr pyr nod, lse cln grs, fr-gd inf por, no fluor

Survey at 937.25m
 Inc: 10.04°
 Azi: 134.30° TVD: 936.40m

SANDSTONE: clr-trnsl, pl gy i/p, f-crs, occ v crs, pr srt, sbang-dom sbrndd, rndd i/p, wk sil cmt, mnr pl brn arg mtx, mnr pyr nod, tr lit, lse cln grs, fr-gd inf por, no fluor

Survey at 965.21m
 Inc: 13.00°
 Azi: 131.43° TVD: 963.80m

SANDSTONE: clr-trnsl, f-dom m, crs-v crs i/p, mod srt, sbang-sbrndd, wk sil cmt, no mtrx, tr liths, lse cln grs, fr-gd inf por, no fluor

Survey at 996.53m
 Inc: 15.29°
 Azi: 121.48° TVD: 994.10m

SILTSTONE: m-dom dk brn, arg, mnr carb spks, disp v sft, amor, mnr sblky

SANDSTONE: clr, trnsl, lt gy, fn-crs gr, pr srt, sbang-pred sbrndd, wk sil cmt, no mtrx, tr org liths, pred lse, cln qtz grs, fr-gd inf por, no fluor

WOB: 3-32klbs
RPM: 33-155
GPM: 650-995
SPP: 1450-3030psi

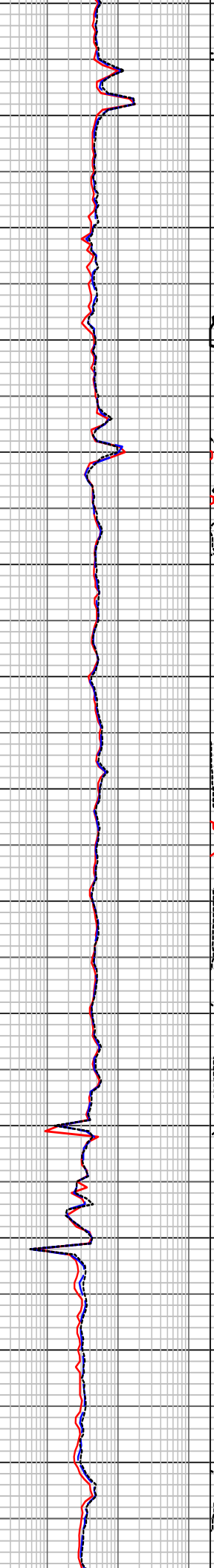
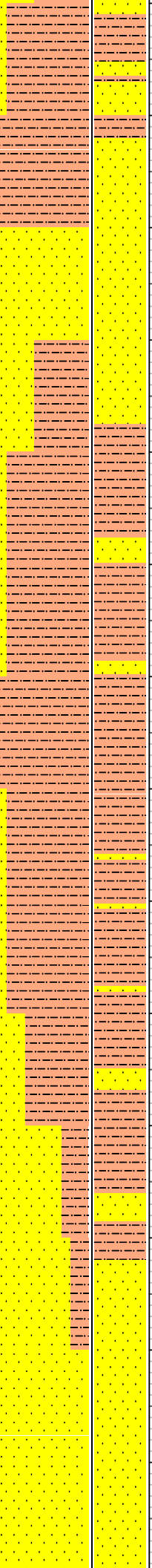
04/10/2008

NB 10 REEFERSX616M-A16 PDC
Bit
311mm (12-1/4") 3x15 3x16 jets
In: 1050.00m Out: 2050.00m
Drilled 1000.00m in xx.xhrs
X-X-XX-X-X-X-XX-XX

WOB: 7-16klbs
RPM: 167-209
GPM: 953-1030
SPP: 2364-2771psi

WOB: 4-15klbs
RPM: 172-206
GPM: 841-1080
SPP: 1923-2870psi

1020
1030
1040
1050
1060
1070
1080
1090
1100
1110
1120
1130
1140
1150
1



100% C1

100% C1

Survey at 1026.43m
Inc: 15.21°
Azi: 119.39° TVD: 1023.00m

SILTSTONE: m brn, m dk brn, arg, mnr carb spks, v sft & disp, amor, mnr sblky

SANDSTONE: clr, trnsl, lt gy, fn-crs gr, pr srt, sbang-pred sbrndd, wk sil cmt, no mtrx, tr orng liths, pred lse, cln qtz grs, fr-gd inf por, no fluor

MW: 1.25 FV: 82 PV: 29 YP: 48
GELS: 11/23/35 SOL: 7.65
pH: 9.2 Ck: 1 CL: 63000

SILTSTONE: m brn, m dk brn, arg, mnr carb spks, sft & disp, amor, mnr sblky

Survey at 1083.00m
Inc: 16.35°
Azi: 122.48° TVD: 1077.30m

SILTSTONE: m-dk brn, arg, tr carb spks, sft & disp, amor, mnr sblky

Survey at 1114.21m
Inc: 17.07°
Azi: 121.75° TVD: 1107.20m

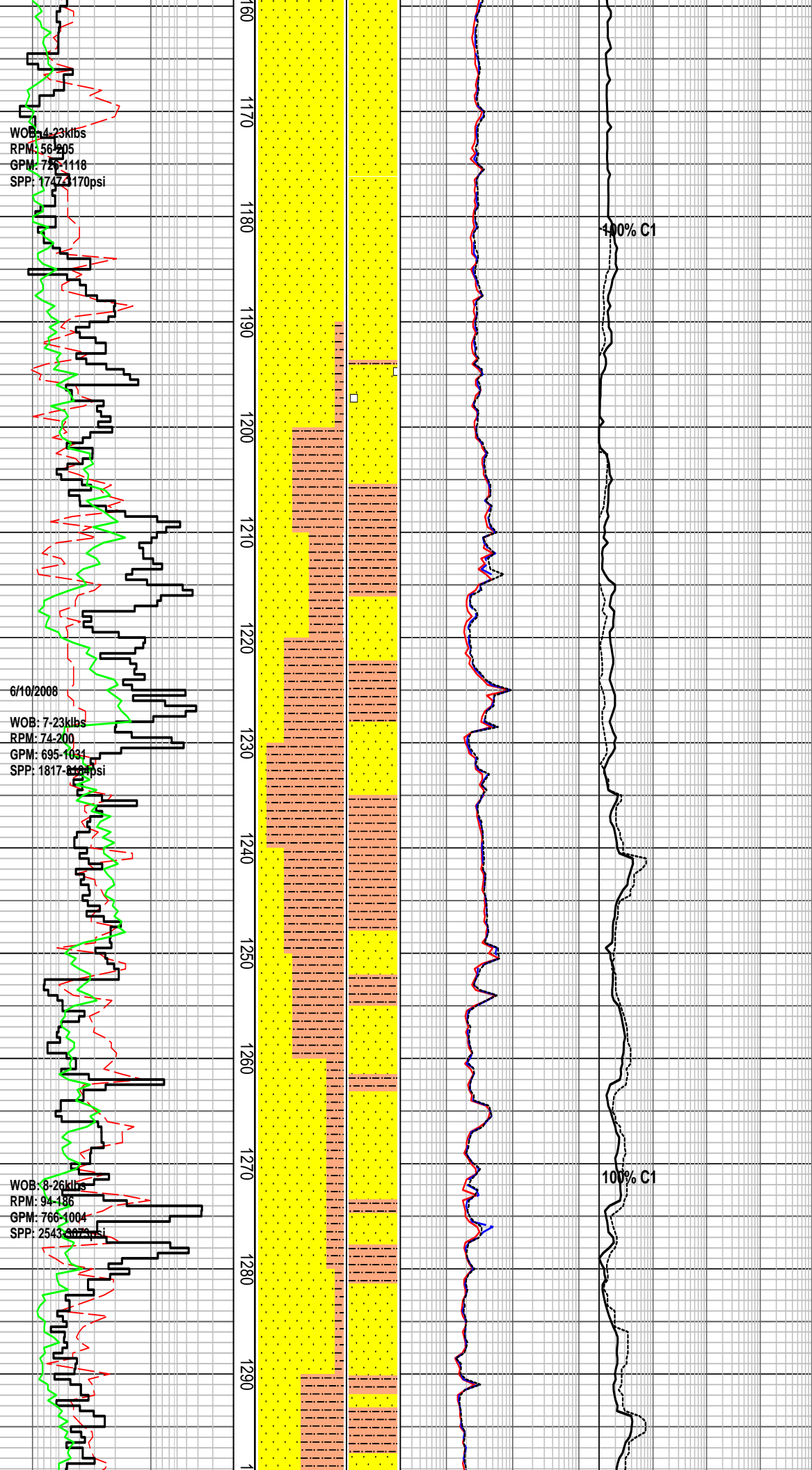
SILTSTONE: m brn, m dk brn, arg, mnr carb spks, sft-frn, disp i/p, sblky

1134-1162m Depth Tracking by Drawworks Sensor

SANDSTONE: lt brnsh gy, off wh, lt gy, grnsh gy, v f-f gr, tr m, mod wl srt, sbang-sbrnd, abd lt brnsh gy arg mtrx, mnr f gr glauc, tr nod pyr, tr carb flks, fri f gr aggs, v pr vis por, no fluor

Survey at 1142.54m
Inc: 18.03°
Azi: 121.60° TVD: 1134.20m

SANDSTONE: trnsl, clr, lt gy, f-pred m-v crs, sbrnd, pr-fr



srt, pred lse cln qtz grs, gd inf por, no fluor

SANDSTONE: trnsl, clr, wh, lt gy, f-v crs, pred m gr, sbang-pred sbrndd, pr srt, tr off wh arg mtrx, tr glauc, tr yel Fe stn, tr rd liths, tr carb frags, pred lse cln qtz grs, gd inf por, no fluor

Survey at 1198.96m
Inc: 18.96°
Azi: 120.96° TVD: 1187.70m

SANDSTONE: lt brn, lt brnsh gy, off wh, v f-f gr, tr m, mod wl srt, sbang-sbrndd, abd lt brnsh gy arg mtrx, mnr f gr glauc, tr nod pyr, tr carb frags, fri f gr aggs, v pr vis por, no fluor

SILTSTONE: m brn gy, m gy, arg, v f aren i/p, tr glauc, tr nod pyr, tr liths, sft-frm, blk-y-sblk

MW: 1.36 FV: 82 PV: 34 YP: 53
GELS: 11/19/27 SOL: 11.22
pH: 9.0 Ck: 1 CL: 63000

Survey at 1224.66m
Inc: 20.37°
Azi: 121.46° TVD: 1211.9m

SILTSTONE: pl-occ m brn gy, arg, occ carb spks & frags, v sft-disp, amor, sblky i/p

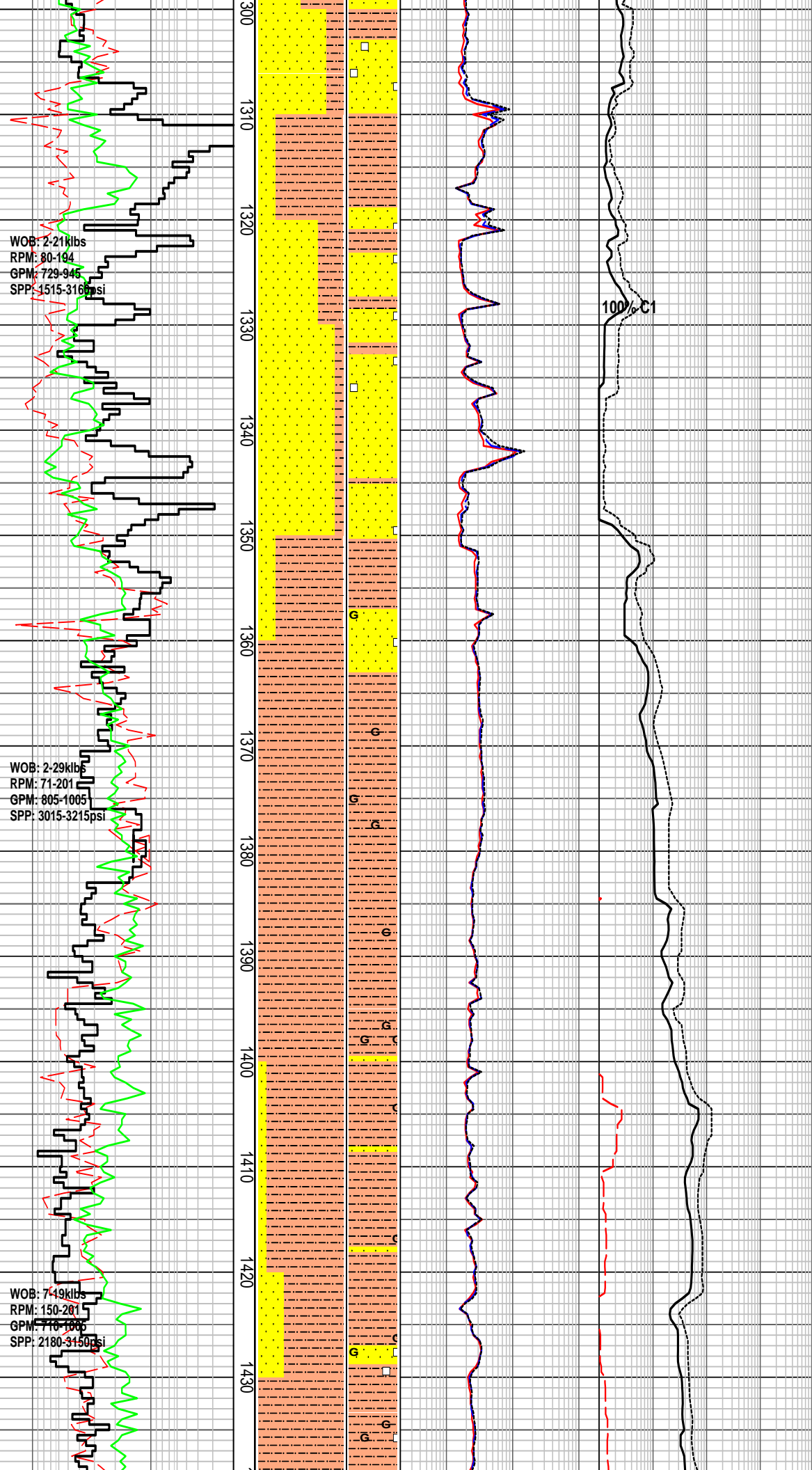
SANDSTONE: clr-trnsl, off wh, m-crs, f i/p, pr srt, sbang-sbrndd, wk sil cmt, occ-com off wh arg mtrx, occ carb spks, lse, fri, v pr vis por, pr inf por, no fluor

SILTSTONE: pl brn-brn gy, m brn gy i/pt, arg, mnr carb spks, rr glauc grs, v sft-disp, amor, rr sbky

Survey at 1255.22m
Inc: 22.11°
Azi: 123.50° TVD: 1240.4m

SANDSTONE: clr-trnsl, mnr pl gy, m-crs, occ v crs, pr srt, sbang-sbrndd, ang i/p, wk sil cmt, rr off wh arg mtrx, occ pyr nod, gen lse cln grs, mnr fri, pr vis por, fr inf por, no fluor

Survey at 1282.52m
Inc: 24.01°
Azi: 125.50° TVD: 1265.5m



SILTSTONE: pl gy-brn gy, arg, occ carb spks, rr glauc grs, v sft-disp, amor, rr sblky

Survey at 1313.59m
 Inc: 25.77°
 Azi: 126.35° TVD: 1293.7m

SANDSTONE: clr-trnsl, off wh, f-m, rr crs, mod srt, sbang-sbrndd, wk sil cmt, occ off wh arg mtrx, occ-com pyr nod, lse, mnr fri, v pr vis por, pr inf por, no fluor

Survey at 1343.38m
 Inc: 27.73°
 Azi: 125.39° TVD: 1320.30m

SANDSTONE: clr-trnsl, off wh, f-occ m, rr crs, mod srt, sbang-sbrndd, wk sil cmt, occ off wh arg mtrx, rr pyr nod, lse, mnr fri, v pr vis por, pr inf por, no fluor

Survey at 1372.41m
 Inc: 30.44°
 Azi: 123.63° TVD: 1345.70m

SILTSTONE: lt-m gy, lt-m brnsh gy, lt grnsh gy, arg, tr carb flks, tr glauc, tr dissem pyr, sft, disp, occ frm, sblky

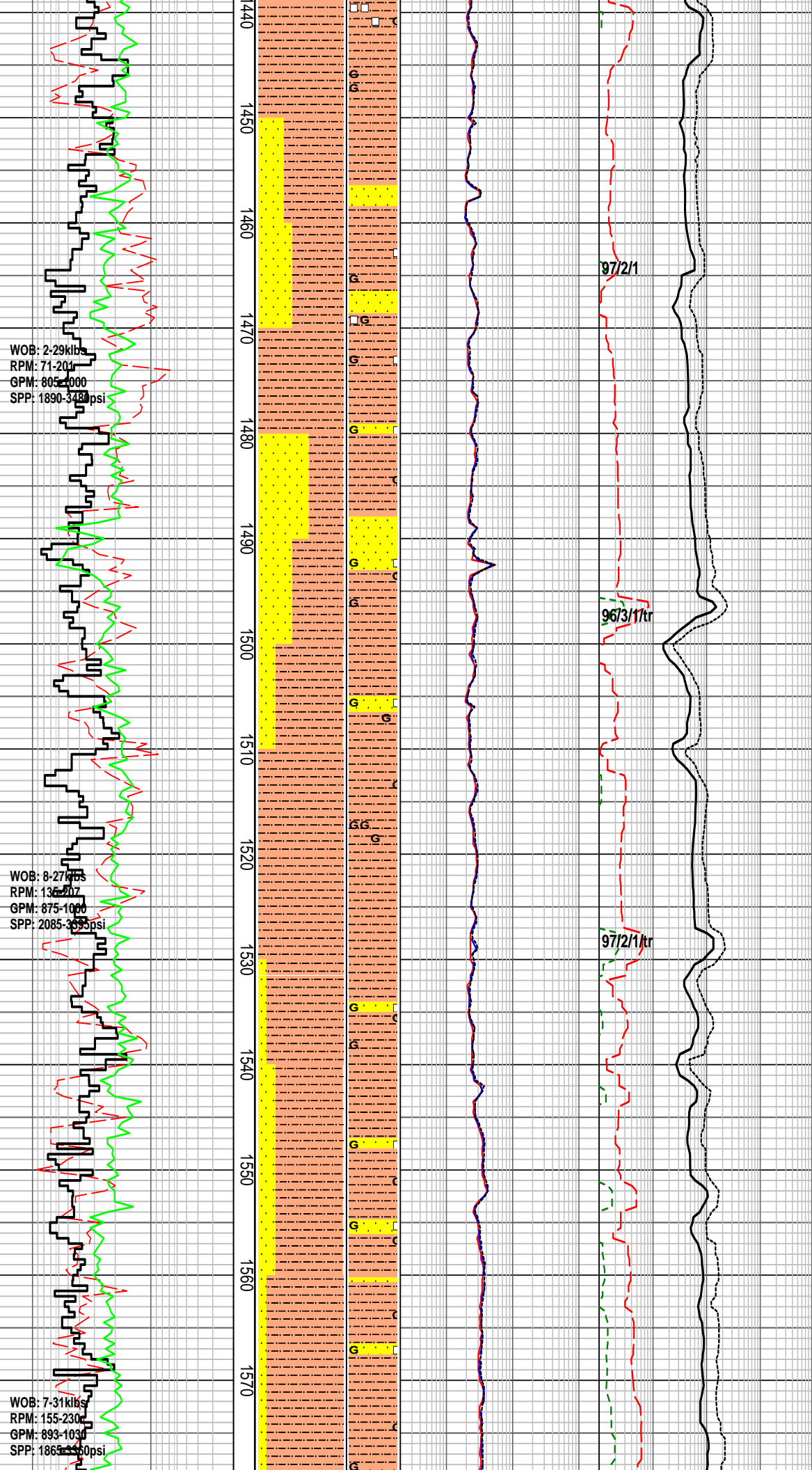
Survey at 1400.56m
 Inc: 32.99°
 Azi: 122.92° TVD: 1369.60m

SILTSTONE: m brn, lt-m grnsh brn, brn gy, arg, abd glauc, rr carb spks, sft-frm, blk

SANDSTONE: trnsl, clr, off wh, grnsh gy, f-m gr, mod srt, sbrndd, mnr lt gy arg mtrx, mnr glauc, rr nod pyr, lse i/p, pr-fr inf por, no fluor

Survey at 1393.70m
 Inc: 35.61°
 Azi: 121.93° TVD: 1393.70m

SILTSTONE: m brn, lt-m grnsh brn, brn gy, arg, rr nod pyr.



mnr glauc, rr carb spks, sft-frm, blk

SANDSTONE: trnsl, clr, off wh, grnsh gy, f-m gr, tr crs, mod srt, sbrndd, mnr lt gy arg mtrx, mnr glauc, rr nod pyr, lse i/p, pr-fr inf por, no fluor

Survey at 1459.39m
Inc: 38.28°
Azi: 120.99° TVD: 1417.40m

SILTSTONE: m brnsh gy, v f aren, rr f gr glauc, mnr nod pyr, tr carb spks, sft-frm, blk

SANDSTONE: trnsl, clr, off wh, lt gy, grnsh gy, f-crs gr, pr srt, sbang-sbrndd, com brnsh gy arg mtrx in f gr aggs, lse m-crs grs, pr-fr inf por, no fluor

SILTSTONE: lt-m brn, brnsh gy, arg, rr glauc, rr carb spks, sft-frm, blk

Survey at 1517.02m
Inc: 43.20°
Azi: 120.19° TVD: 1461.00m

SILTSTONE: lt-m brn, brnsh gy, arg, rr glauc, rr carb spks, sft-frm, blk

Survey at 1546.81m
Inc: 45.86°
Azi: 121.16° TVD: 1482.30m

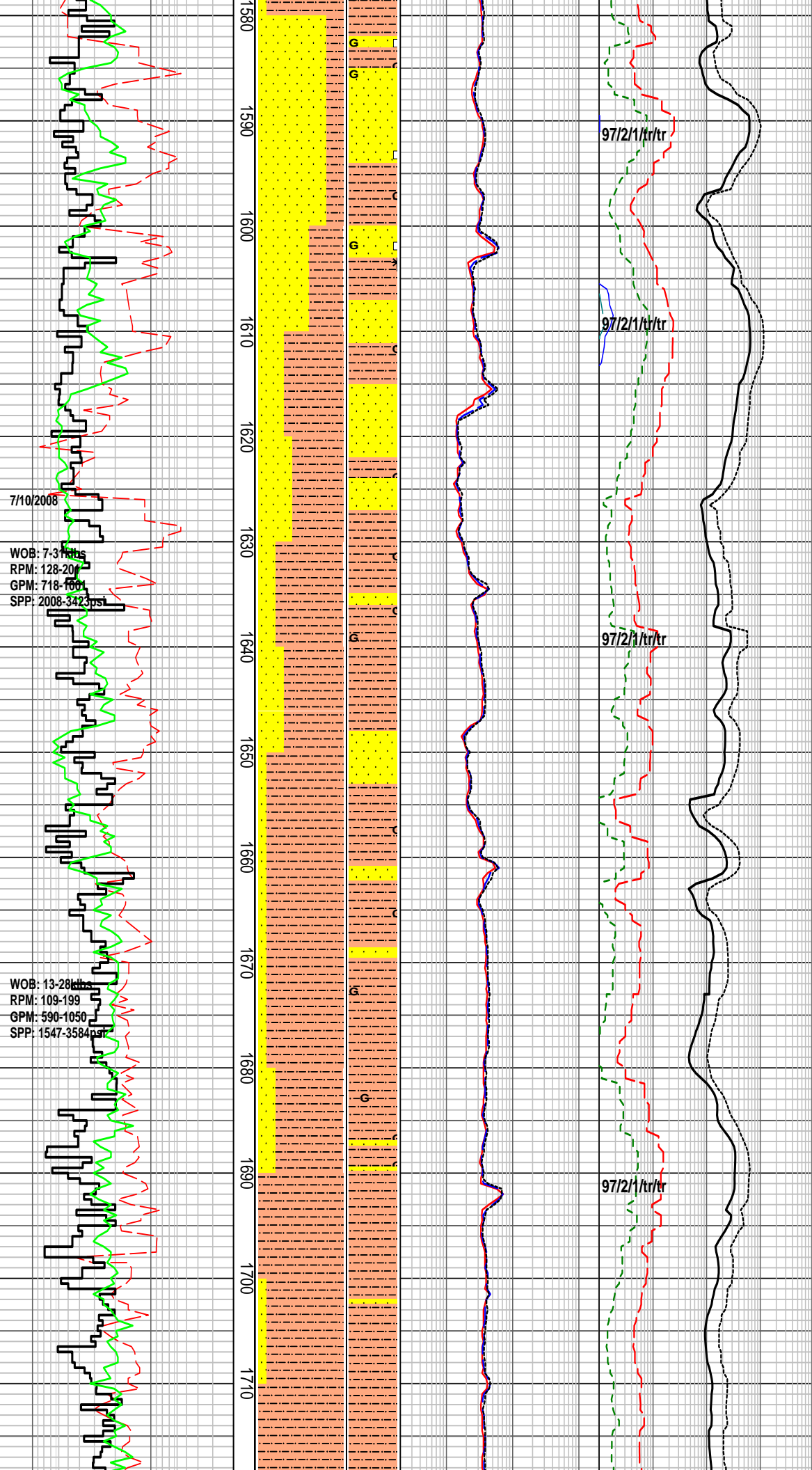
SANDSTONE: trnsl, clr, off wh, lt gy, f-m gr, fr srt, sbang-sbrndd, com brnsh gy arg mtrx, rr glauc, fri aggs, pr inf por, no fluor

Survey at 1575.26m
Inc: 47.86°

WOB: 2-29klb
RPM: 71-204
GPM: 805-1000
SPP: 1890-3480psi

WOB: 8-27klb
RPM: 135-207
GPM: 875-1000
SPP: 2085-3695psi

WOB: 7-31klb
RPM: 155-230
GPM: 893-1030
SPP: 1865-3600psi



7/10/2008

WOB: 7-37 r/s
 RPM: 128-207
 GPM: 718-1600
 SPP: 2008-3423 psi

WOB: 13-28 r/s
 RPM: 109-199
 GPM: 590-1050
 SPP: 1547-3584 psi

Azi: 121.84° TVD: 1501.70m

SANDSTONE: trnsl, clr, off wh, lt gy, f-m gr, fr srt, sbang-sbrndd, com brnsh gy arg mtrx, rr glauc, fri aggs, pr inf por, no fluor

Survey at 1604.83m
 Inc: 49.87°
 Azi: 120.74° TVD: 1521.2m

MW: 1.38 FV: 77 PV: 39 YP: 58
 GELS: 12/25/30 SOL: 12.37
 pH: 8.4 Ck: 0.5 CL: 56000

SILTSTONE: pl gy, pl-m brn gy, arg, mnr glauc grs, occ carb spks, v sft-disp, amor, mnr sbiky

Survey at 1631.03m
 Inc: 51.38°
 Azi: 119.97° TVD: 1537.8m

SANDSTONE: clr-trnsl, off wh, f, occ v f-f, wl srt, sbang-sbrndd, wk calc cmt, occ off wh arg mtrx, mnr liths, gen lse cln grs, mnr fri, pr-v pr vis por, pr inf por, no fluor

Survey at 1659.42m
 Inc: 52.99°
 Azi: 120.24° TVD: 1555.2m

SILTSTONE: pl brn, m brn i/p, arg, rr glauc grs, occ-com carb spks, rr micmic, v sft-disp, amor, mnr sbiky

Survey at 1687.79m
 Inc: 54.14°
 Azi: 121.36° TVD: 1572.1m

SANDSTONE: off wh, v f, wl srt, sbang-sbrndd, wk calc cmt, com off wh arg mtrx, mnr carb spks, fri, v pr vis por, no fluor

Survey at 1716.29m

WOB: 16-31klbs
RPM: 89-196
GPM: 732-1001
SPP: 2277-3993psi

WOB: 8-32klbs
RPM: 100-215
GPM: 712-984
SPP: 1980-3633psi

WOB: 15-33klbs
RPM: 150-199
GPM: 805-968
SPP: 2643-3620psi

1720
1730
1740
1750
1760
1770
1780
1790
1800
1810
1820
1830
1840
1850

96/3/1/tr/tr
CO2: 70ppm

CO2: 600ppm

96/3/1

CO2: 710ppm

Inc: 55.94°
Azi: 121.40° TVD: 1588.4m

SILTSTONE: m-dk brn, occ pl
brn, com arg, occ mntr carb
spks, v sft-disp, frm-mod hd
i/p, amor, sblky

Survey at 1744.93m
Inc: 57.72°
Azi: 121.05° TVD: 1604.1m

SILTSTONE: m-dk brn, com
arg, occ frm carb spks, v sft-disp,
occ frm-mod hd, amor, mntr
sblky

Survey at 1773.21m
Inc: 59.89°
Azi: 120.16° TVD: 1618.7m

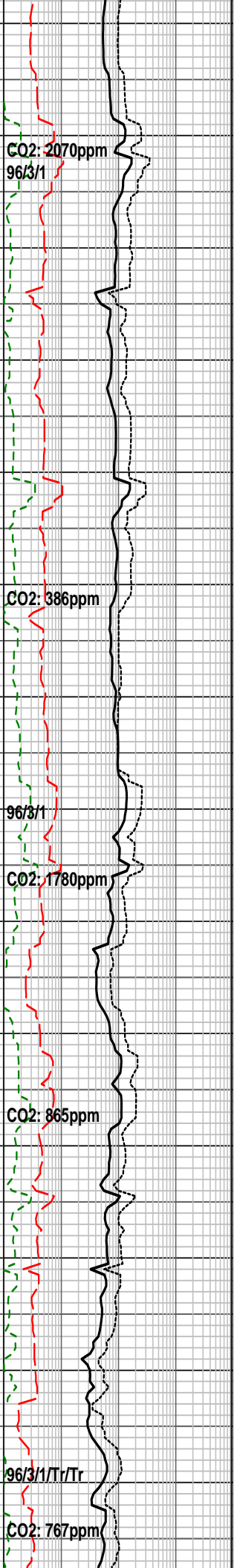
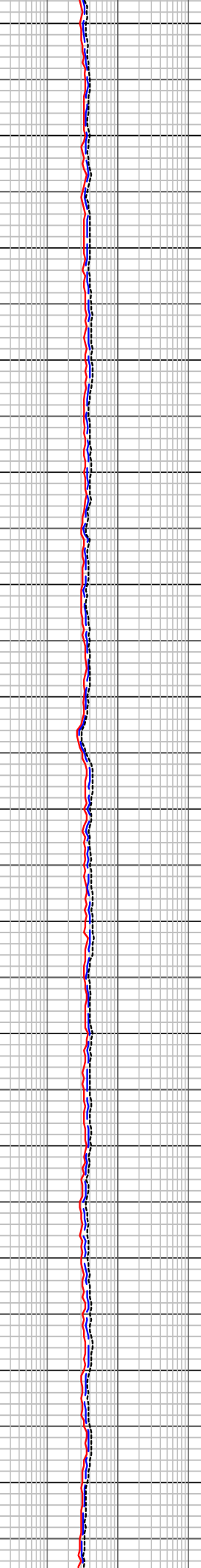
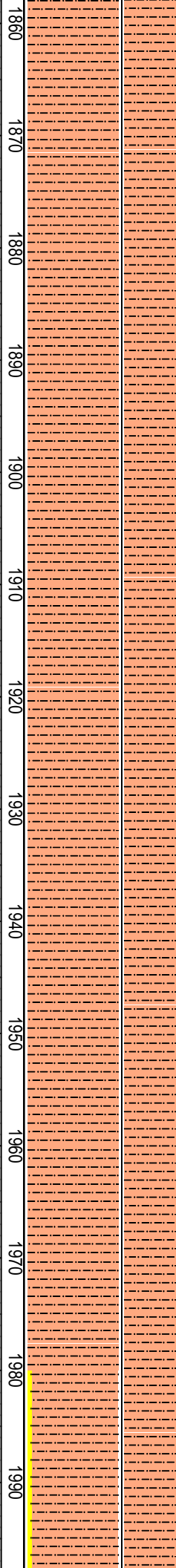
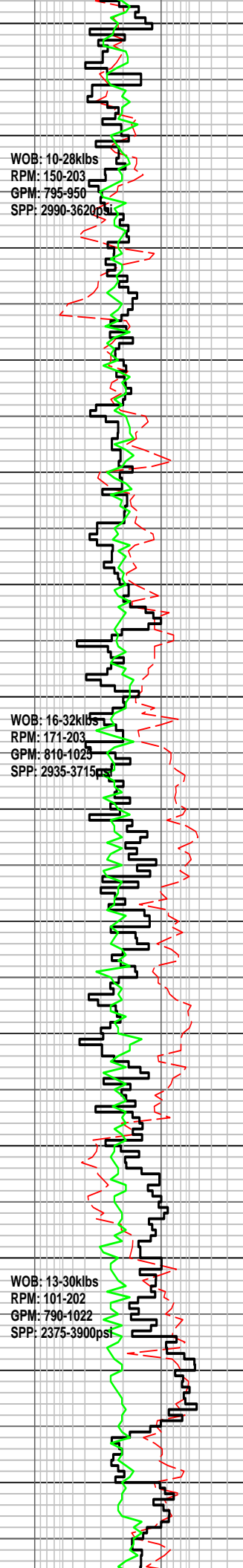
SILTSTONE: pl-m brn, mntr dk
brn, com arg, mntr carb spks, v
sft-disp, occ frm, amor, sblky

Survey at 1804.01m
Inc: 62.37°
Azi: 120.04° TVD: 1633.6m

SILTSTONE: pl-m brn, com
arg, rr aren, mntr carb spks,
mntr glauc grs, v sft-disp, occ
frm, amor, sblky

Survey at 1832.44m
Inc: 64.57°
Azi: 120.07° TVD: 1646.30m

SILTSTONE: pl-occ m brn,
com arg, mntr carb spks, rr
glauc grs, v sft-disp, occ frm,
amor, sblky



Survey at 1861.47m
Inc: 67.09°
Azi: 120.46° TVD: 1658.20m

SILTSTONE: m brnsh gy, m-dk gy, arg with cly washing from spls, tr LST frags, mnr f carb spks, tr liths, sft & disp, amor, blkly

Survey at 1891.65m
Inc: 69.46°
Azi: 120.95° TVD: 1669.30m

SILTSTONE: m bnsh gy, m-dk gy, arg, tr nod pyr, tr f gr glauc, mnr f carb spks, tr liths, sft & disp, amor, blkly

Survey at 1918.90m
Inc: 71.39°
Azi: 121.07° TVD: 11678.50m

SILTSTONE: m brnsh gy, m-dk gy, arg, rr f carb spks, tr f gr glauc, sft-frm, disp, amor, blkly

Survey at 1947.87m
Inc: 73.31°
Azi: 120.96° TVD: 1687.20m

SILTSTONE: m brnsh gy, m-dk gy, arg with cly washing from spls, rr f carb spks, tr f gr glauc, sft-frm, disp, amor, blkly

Survey at 1977.99m
Inc: 75.01°
Azi: 120.52° TVD: 1695.50m

SANDSTONE: off wh, v lt brnsh gy, vf-f gr, sbang-sbrddd, wl srt, abd strong calc cmt, mnr f gr

glauc, tr musc, hd aggs, ti vis por, no fluor

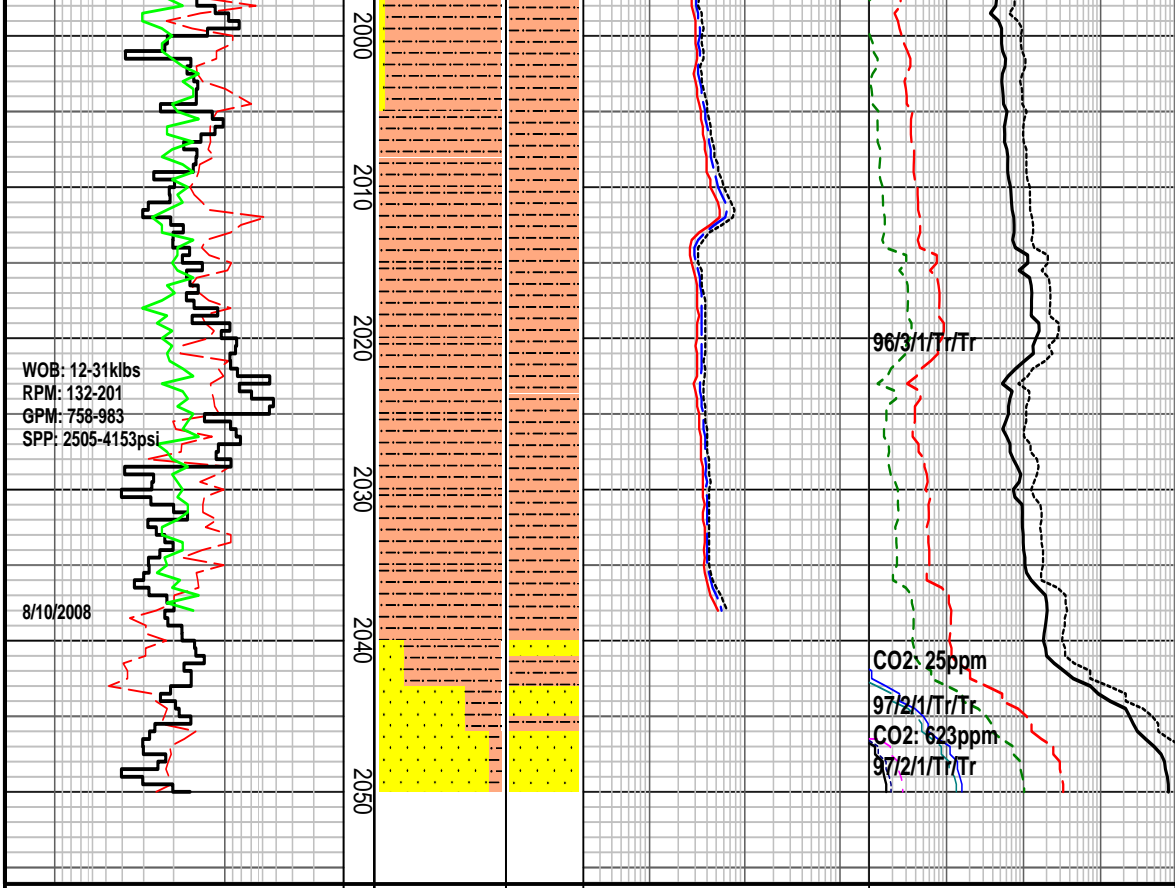
Survey at 2004.68m
Inc: 76.64°
Azi: 119.87° TVD: 1702.00m

SILTSTONE: m-dk gy, occ m brnsh gy, arg i/p, mnr-com f gr glauc, tr f carb spks, frm-occ mod hd, sblky-blky

SILTSTONE: m-dk brn, brn gy, pl brn i/p, gen arg, com glauc grs, rr pyr nod, frm-mod hd, sft-disp, sblky-blky

SANDSTONE: off wh, v f-f, wl srt, sbang-sbrndd, mod calc cmt, com off wh arg mtrx, mnr liths & carb spks, lse, fri-mod hd, pr vis por, no fluor

Henry 2DW1 ST1 reached 311mm (12-1/4") hole section TD @ 2050.00m at 00:30hrs on 08/10/08



HENRY 2DW1 ST1 FORMATION EVALUATION LOG

WOB		MD meters 1:500	LITHOLOGY %	INTERPRETED LITHOLOGY	RESISTIVITY			CHROMATOGRAPH				CALC	REMARKS
10	20				30	40	2	20	200	Total Gas			
ROP								Methane					
Gamma Ray								Ethane					
API								Propane					
								i-Butane					
								n-Butane					
								i-Pentane					
								n-Pentane					
								ppm					